

TURBO-SEPARATOR T14-3P FOR COOLANT RECYCLING

Tramp Oil and Fine Solids Removing Centrifuge with Large Solids Holding Capacity

Portable Sump to Sump Coolant Recycling System

The **T14-3 P** is a complete coolant purification centrifuge system designed for high-solids metalworking and ceramic applications such as aerospace, medical, automotive and electronics.

Operating sump-to-sump, the **T14-3 P** separates tramp oils and solids while continuously returning cleaned coolant to the machine tool's sump.

The heart of the **T14-3 P** is the high efficiency Turbo-Separator. With a rotational speed of 3,000 RPM, the T14-3P couples high G forces with a large 22 pound rotor capacity to remove solids down to 2 micron and tramp oils to 0.5%.

This completely integrated system includes a self-priming feed pump, a centrifuge drain reservoir and controls. Processing capacity for the T14-3P is up to 160 gallons/hour.

No specialized tools or training are necessary to operate the system.



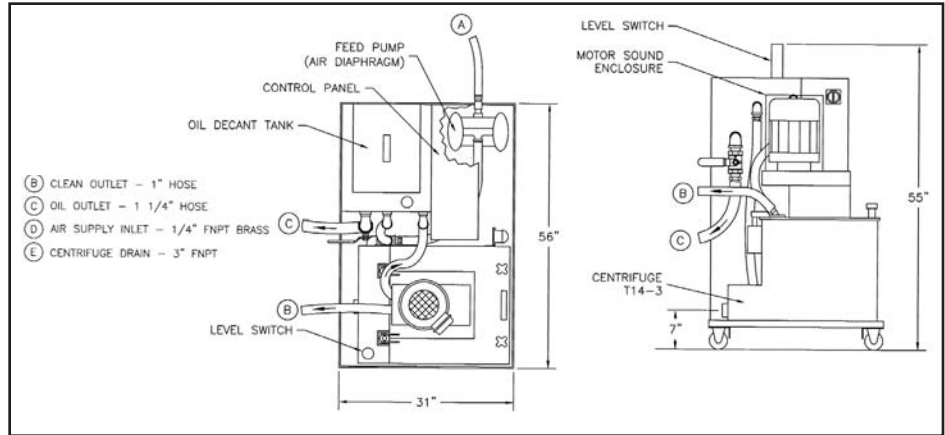
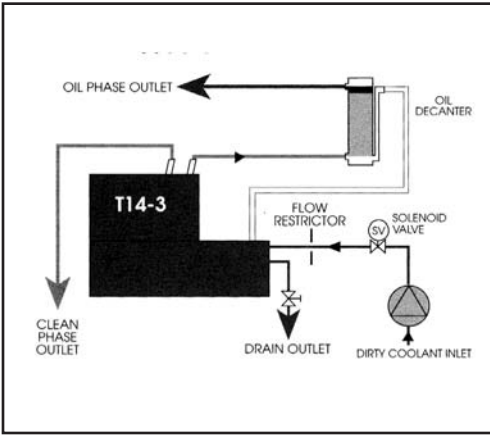
THE PORTABLE TURBO SEPARATOR T14-3P

Other applications for the T14-3 Portable Turbo Separator include:

- Recycling of aqueous parts washer chemicals
- Recycling of vibratory finishing fluids
- Purification of rinse waters



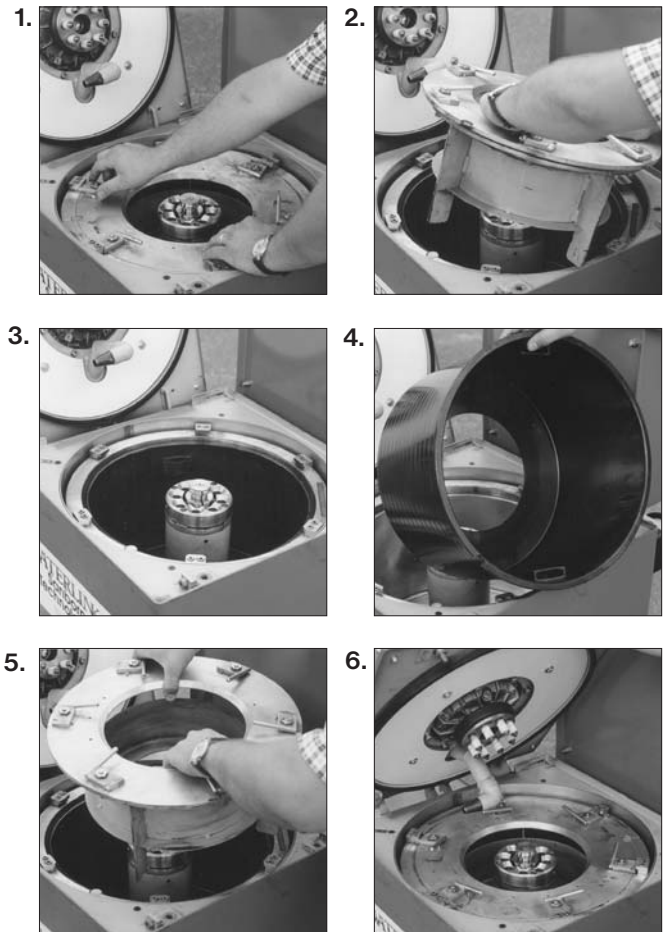
T14-3 PORTABLE TURBO SEPARATOR LAYOUT



GENERAL SPECIFICATIONS

PROCESS CAPACITY	1.3 - 2.8 GPM
MAXIMUM PROCESS TEMPERATURE	180°F
HOUSING	STAINLESS STEEL CONSTRUCTION WITH QUICK COUPLED CONNECTIONS
ROTOR:	STAINLESS STEEL (304) CONSTRUCTION • CAPABLE OF HANDLING pH LEVELS OF 4-14
ROTOR:	• CAPACITY OF 3.7 GAL • MAXIMUM SLUDGE CAPACITY 22 LBS. • REMOVABLE LINER
MOTOR:	7.0 HP AT 2880 RPM, 460 VOLTS 60 HZ • DIRECT DRIVE WITH VFD FOR SMOOTH STARTING AND BRAKING • BRAKING BY REVERSED CURRENT
SAFETY LID SWITCH	
ELECTRICAL CONTROLS BY PLC	
TRANSFER PUMP	
SELF PRIMING, AIR OPERATED, DOUBLE DIAPHRAGM PUMP - AIR CONSUMPTION - 1 SCFM	
OIL HOLDING TANK	
50 GAL INCLUDES OVERFLOW PROTECTION WITH LEVEL CONTROL	

Solids Removal from the T14-3P



The separated sludge can be quickly and easily removed:

1. The hinged cover is opened and the quick-locks disengaged by hand.
2. The rotor cover is removed and set aside.
3. The sludge filled liner is lifted out by the handles and dry solids removed.
4. A cleaned sludge liner is reinstalled.
5. The rotor cover is reinstalled and the quick-locks engaged.
6. The cover is closed and locked and the centrifuge switched on.



23 Walpole Park South
 Walpole, MA 02081-2558 USA
 Telephone (508) 660-9150
 Fax: (508) 660-9151
 E-mail sales@sanborntechnologies.com

www.sanborntechnologies.com

All specifications in this datasheet are subject to change without notice.
 Copyright © 2006
 REV-082006