



Turbo-Separator

Centrifugal Cleaning of Coolants,
Oils and other Industrial
Fluids without the use of filter media

Turbo-Separator T14 Series

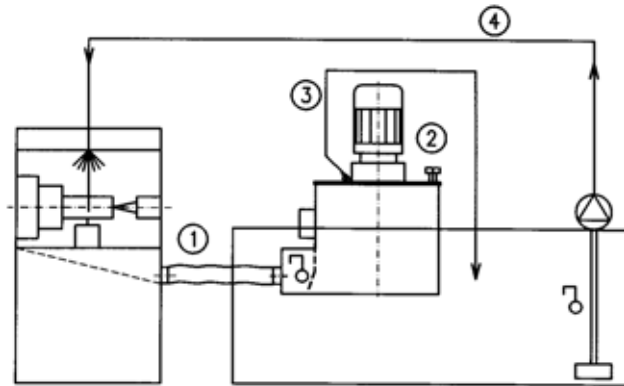


Turbo-Centrifuge T14

40 GPM, Large Solids Capacity, Removable Liner, 3,400 RPM

Typical Continuous Flow Process

- 1) Gravitational flow of the dirty fluid into the base collection tank under the rotor
 Internal feed mechanism lifts the dirty fluid up into the centrifuge rotor
- 2) Separation of the solids from the fluid, where the particles settle on the wall of the sludge basket
- 3) The cleaned fluid is removed from the rotor with a scoop and directed to the clean coolant tank
- 4) Pump returns the cleaned coolant from the coolant tank to the machine tool.



The T14 centrifuge is designed to remove a large volume of sludge before the liner has to be serviced. Capable of processing liquids at flow rates up to 40 GPM, the 3,400 rpm rotor will remove fine solids down to 2-5 micron.

A wide range of solid particulate – all types of metal (both magnetic and non-magnetic), glass, ceramics, hard metals, graphite and plastics can be filtered from a variety of fluids such as emulsions, oil, solvents, water, etc.

The large diameter aluminum rotor and high speed rotation guarantees filtration quality. The heavy-duty plastic sludge basket facilitates simple operation.

Operator Safety is paramount and designed into every Turbo-Separator. A Cover lock as well as other controls prevents the centrifuge from being opened when the rotor is spinning or activated when the cover is opened.

The electrical controls, with all the respective indicator lamps and switches are standard equipment.

Benefits

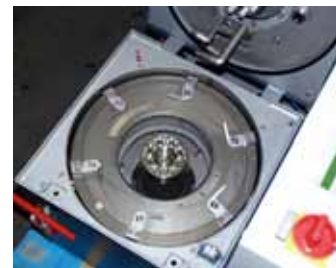
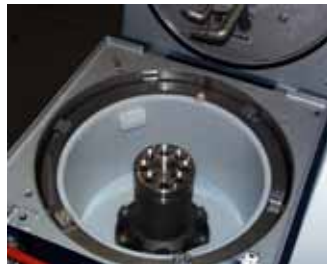
- No costs for filter medias such as non-woven fabrics
- Minimal disposal costs, due to the sludge cake being solid and dried without the additional burden of filter materials
- Optimal machining results due to the high level of purity of the cooling fluid
- Personnel satisfaction through simple operation

Easy to Clean Centrifuge Bowl Liner

The separated sludge can be quickly and easily removed from the T14 rotor.

The centrifuge is switched off; raise the housing cover, disengage the quick locks and remove the rotor cover

The dirty sludge basket is removed



Install the cleaned sludge basket

The rotor cover is reinstalled and locked in place, housing cover is lowered and the centrifuge is switched on.



Basic Centrifuge Unit

- Separation of fine solids from water based fluids or oils
- Flow rates up to 40 gpm
- Sludge capacity to 22 pounds
- Inlet height at 3 inches
- Pressurized outlet



Purification of Grinding Oil

- Removal of steel, HSS and carbide from grinding oil
- Process rate up to 40 gpm
- 260 gallon clean tank
- High efficiency immersion chiller
- High pressure supply pump



Recycling of Acidic Burnishing Compound

- Separation of copper, iron, steel and abrasives from burnishing compound
- Complete systems available with tanks, automatic proportional mixers, pumps
- Flow rates from 5 – 40 gpm

Multiple units on central grinding system

- High efficiency separation of carbide and HSS from oil or water based coolant
- Optional chiller, PLC controls, high pressure supply pump



Portable Recycler for Plant-wide applications

- Removal of fine particulate from individual sumps, pits, or tanks
- For oil, coolant or other water based applications
- Self-priming air feed pump



Coolants, Oils, Industrial Fluids Filtration with Turbo-Separator Centrifuges and Filter Systems

Technical Data

Standard-Centrifuge T14

Rotor	Motor	Controls	Standard Equipment
- Rotor Capacity: 3.7 gals Sludge Capacity: 22 pounds Processing capacity: 1 – 40 GPM - Acceleration : min.- max. 1440 – 1820 g - pH Range : Standard Aluminum Rotor : 6.5 – 9.0, Stainless Steel Rotor : 4.0 – 14.0 - Operating Temp Max : 180 deg F	- 7.0 HP : - Rated speed: 2900 rpm	- PLC controls with thermal protection - Indicator lamps for operation and faults - Controls transformer	- Cover Lock - 2 sludge baskets - Manuals

Specification	T14-2	T14-2P	T14-2-158	T14-2-264
Configuration:	Free Standing	Portable unit	Complete Filter System	Complete Filter System
Weight dry appx (lbs):	440	560	1,360	1,400
Dimensions (in) (LxWxH):	26x28x35	51x30x50	47x39x72	73x52x72
Inflow height min (in):	3.00	Not Applicable	3.00	3.00
Clean Fluid Tank (gals):	Not Applicable	Not Applicable	116	238
Dirty Collection Tank (gals):	5	5	42	26
Connection (in):	3 in/1.25 out	1.25 in/1.25 out	3 in/1.25 out	3 in/1.25 out

Turbo-Separators – The Right Choice

- Centrifuges with manual sludge removal for processing rates of up to 40 gpm
- Fully automatic Centrifuges to process up to 150 gallons of sludge per day
- Central filtration systems for extensive an complex filtration tasks
- From the free-standing T14 to an integrated T40-2-264 with automatic discharge, tanks, chiller and supply pump we have a design to meet your needs.

