

TURBO-SEPARATOR T14-3AQ FOR PARTS WASHER FLUID RECYCLING

Oil Removing Centrifuge with Large Solids Holding Capacity

Recycles Aqueous Parts Washer Fluids by Removing Oils and Solids

The **T14-3AQ** is designed to remove oil and solids from aqueous parts washer baths. The system includes a stainless steel centrifuge, transfer pump and an oil holding tank.

The unit provides simple continuous operation with minimal operator involvement to return recycled fluid back to the reservoir, maintaining bath purity. The removed oils are decanted to an integrated tank, and up to 22 pounds of sludge can easily be removed as a relatively moisture-free cake.

The **T14-3AQ** reduces waste volumes, disposal costs, and new bath solution purchases by as much as 98%.

Aqueous bath solution life is extended significantly, and cleaning effectiveness is noticeably improved.

All wetted parts of the system are stainless steel or plastic. The system is designed to operate at temperatures up to 180 degrees F and at pH ranges of 4-14.

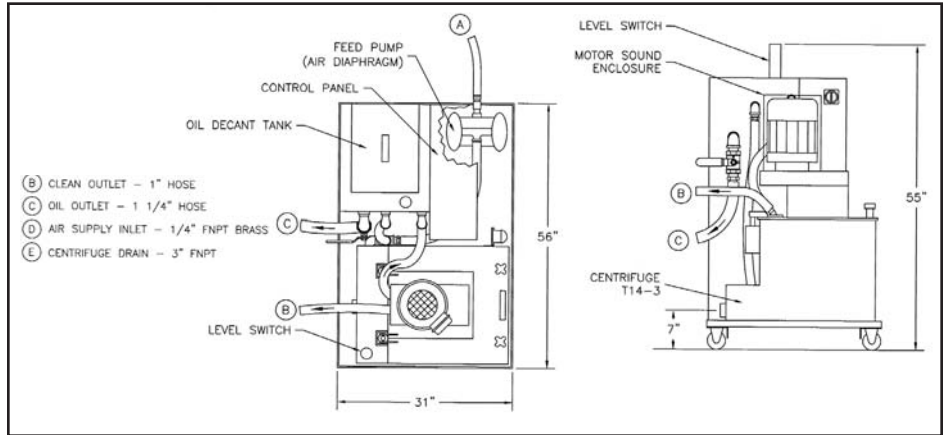
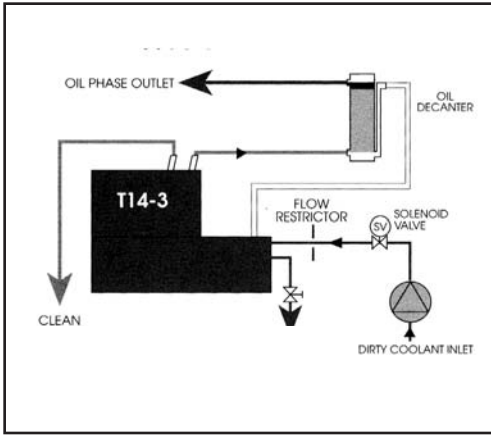
The **T14-3AQ** is inexpensive to operate and, unlike membrane systems, consumes no expendables and does not require free oil removal prior to processing.



THE TURBO-SEPARATOR T14-3AQ



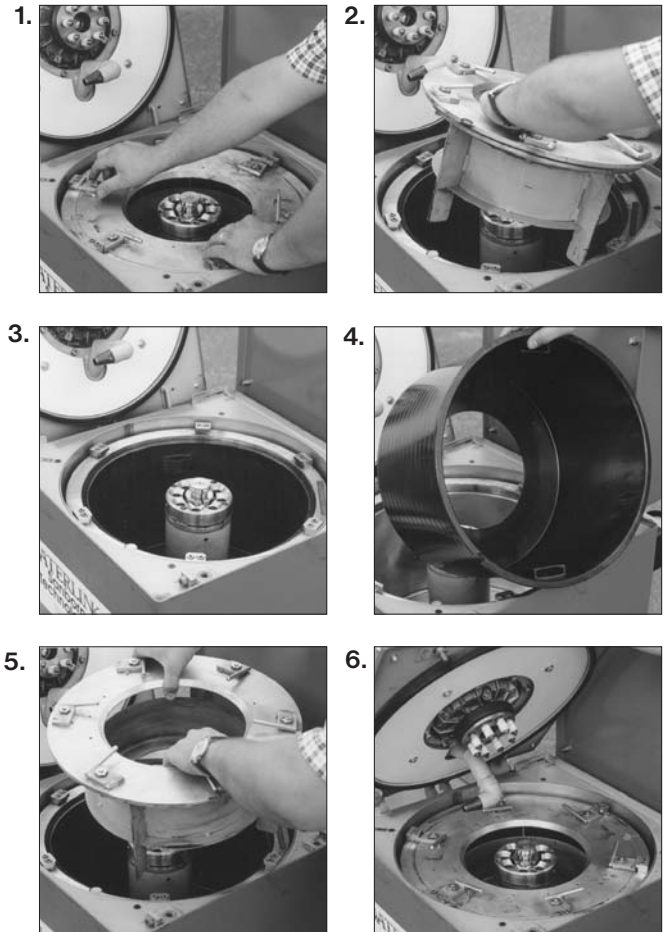
T14-3AQ TURBO SEPARATOR LAYOUT



GENERAL SPECIFICATIONS

PROCESS CAPACITY	1.3 - 2.8 GPM
MAXIMUM PROCESS TEMPERATURE	180°F
HOUSING	STAINLESS STEEL CONSTRUCTION WITH QUICK COUPLED CONNECTIONS
ROTOR:	STAINLESS STEEL (304) CONSTRUCTION • CAPABLE OF HANDLING pH LEVELS OF 4-14
ROTOR:	• CAPACITY OF 3.7 GAL • MAXIMUM SLUDGE CAPACITY 22 LBS. • REMOVABLE LINER
MOTOR:	7.0 HP AT 2880 RPM, 460 VOLTS 60 HZ • DIRECT DRIVE WITH VFD FOR SMOOTH STARTING AND BRAKING • BRAKING BY REVERSED CURRENT
SAFETY LID SWITCH	
ELECTRICAL CONTROLS BY PLC	
TRANSFER PUMP	
SELF PRIMING, AIR OPERATED, DOUBLE DIAPHRAGM PUMP - AIR CONSUMPTION - 1 SCFM	
OIL HOLDING TANK	
50 GAL INCLUDES OVERFLOW PROTECTION WITH LEVEL CONTROL	

Solids Removal from the T14-3AQ



The separated sludge can be quickly and easily removed:

1. The hinged cover is opened and the quick-locks disengaged by hand.
2. The rotor cover is removed and set aside.
3. The sludge filled liner is lifted out by the handles and dry solids removed.
4. A cleaned sludge liner is reinstalled.
5. The rotor cover is reinstalled and the quick-locks engaged.
6. The cover is closed and locked and the centrifuge switched on.



23 Walpole Park South
Walpole, MA 02081-2558 USA
Telephone (508) 660-9150
FAX: (508) 660-9151
E-mail sales@sanborntechnologies.com

www.sanborntechnologies.com

All specifications in this datasheet are subject to change without notice.
Copyright © 2006
REV-082006